

# PARALLEL SLIDE GATE VALVE

Parallel slide gate valve are ideal for high temperature and pressure line to prevent thermal binding.

## Features and benefits

Parallel slide construction can be furnished for high differential pressure services or where thermal expansion may cause sticking of a wedge type.

The parallel slide gate assembly consists of two interchangeable spring loaded discs, a fully guided disc holder, and retaining pins.

Springs are fitted between discs to provide initial sealing force only, and do not maintain the sealing force.

Discs are interchangeable which simplifies in-line maintenance and eliminates the need to custom fit the seats to the discs.

Position seating eliminates stress and potential binding due to thermal expansion of the stem.

No additional torque required to achieve a positive seal once disc are in position.

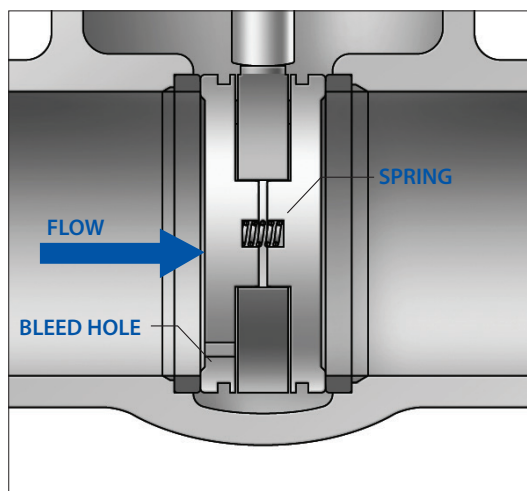
Lower seating torque to reduce actuator size and cost

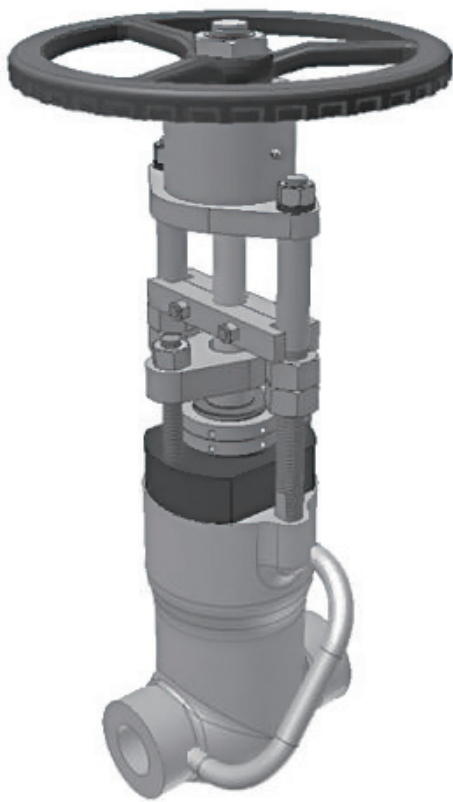
Hardfaced seating surfaces provide high cycle capability in very high differential pressure services

By-pass valve are used to reduce the traversing differential pressure across the valve seat.

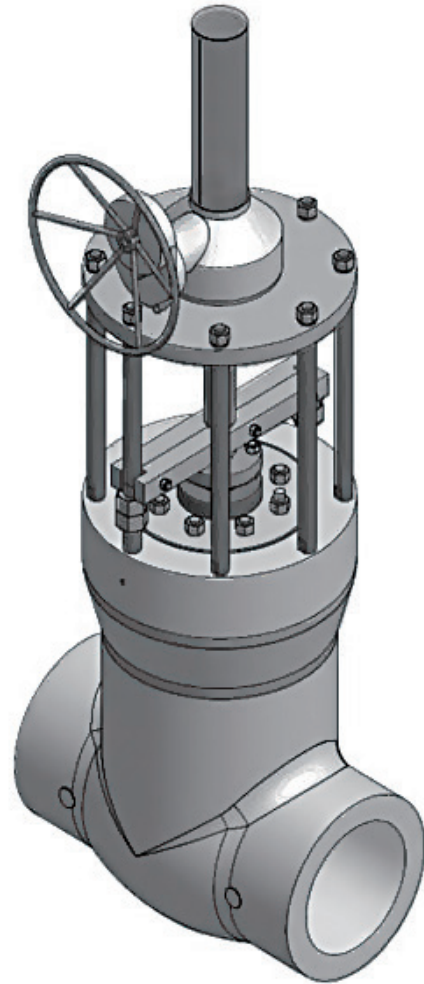
It reduces the size of the operating gear and also provide a convenient means for the initial warming through of pipe lines

Equalizing devices are used to relieve the fluid trapped between the seat forces, and to provide an outlet for the fluid displaced by the valve stem traversing to the shut position.





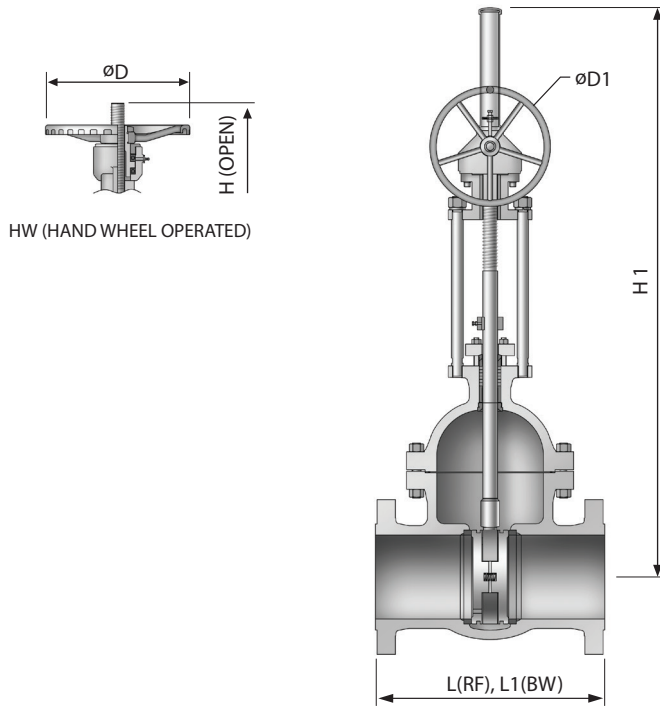
4" & SMALLER



6" & LARGER



# BOLTED BONNET TYPE



## END CONNECTION

- R.F FLANGED ENDS TO ASME B16.5
- B.W. ENDS TO ASME B16.25
- R.T.J FLANGED ENDS TO ASME B16.5
- SIZE 26" AND LARGER, FLANGED ENDS ACCORDING TO ASME B16.47 SER.A OR SER.B

## STANDARD MATERIAL SPECIFICATIONS

NO.	PART NAME	MATERIAL		
1	BODY	A216 - WCB	A217 - WC6	A217 - C12A
2	BONNET	A216 - WCB	A217 - WC6	A217 - C12A
3	DISC	A216 - WCB+STL	A217 - WC6+STL	A217 - C12A+STL
4	STEM	A479 - 410	A479 - 410	A479 - 410
5	HAND WHEEL	A53	A53	A53
6	BODY SEAT RING	A576 - 1020+STL	A182 - F11+STL	A182 - F91+STL
7	BACK SEAT RING	A479 - 410	A479 - 410	A479 - 410
8	GASKET	SPIRAL WOUND / GRAPHITE+304+304		
9	PACKING	GRAPHITE+GRAPHITE WITH INCONEL WIRE		
10	GLAND FLANGE	A105	A105	A105
11	GLAND BOLT	A193 - B7	A193 - B7	A193 - B7
12	GLAND NUT	A194 - 2H	A194 - 2H	A194 - 2H
13	PACKING GLAND	A576 - 1020+Cr	A479 - 410	A479 - 410
14	BONNET BOLT	A193 - B7	A193 - B16	A193 - B16
15	BONNET NUT	A194 - 2H	A194 - 4	A194 - 4
16	DISC GUIDE	A216 - WCB	A217 - WC6	A217 - C12A
17	PACKING BUSH	A479 - 410	A479 - 410	A479 - 410
18	YOKE	A283 - D	A283 - D	A283 - D
19	YOKE BAR	A576 - 1020	A576 - 1020	A576 - 1020
20	YOKE NUT	A194 - 2H	A194 - 2H	A194 - 2H
21	STOPPER	A283 - D	A283 - D	A283 - D
22	COIL SPRING	INCONEL X - 750	INCONEL X - 750	INCONEL X - 750
23	STOP BAR	A576 - 1020	A576 - 1020	A576 - 1020
24	SPRING WASHER	A576 - 1020+Zn	A576 - 1045+Zn	A576 - 1045+Zn
25	GEAR BOX	DUCTILE	DUCTILE	DUCTILE
26	STEM PROTECTOR	A53	A53	A53
27	YOKE CAP	A576 - 1020	A576 - 1020	A576 - 1020
28	YOKE SLEEVE	A439 - D2C	A439 - D2C	A439 - D2C
29	HINGE NUT	A47 - 32510+Zn	A47 - 32510+Zn	A47 - 32510+Zn
30	NIPPLE	STEEL	STEEL	STEEL

## DIMENSION AND WEIGHT

### CLASS 150

UNIT : mm

SIZE	2	3	4	6	8	10	12
L	177.8	203.2	228.6	266.7	292.1	330.2	355.6
L1	215.9	282.4	304.8	403.4	419.1	457.2	501.7
D	200	224	250	315	355	400	450
D1	-	-	-	-	-	-	-
H	490	590	740	1001	1252	1410	1605
H1	-	-	-	-	-	-	-
WEIGHT(Kg)	16	29	43	72	116	173	263

### CLASS 300

UNIT : mm

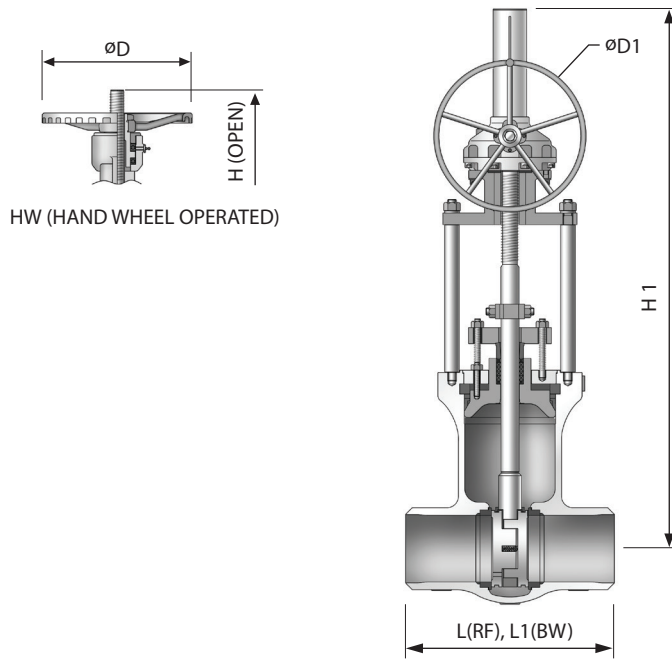
SIZE	2	3	4	6	8	10	14	16	18	24
L	215.9	282.4	304.8	403.4	419.1	457.2	762.0	838.2	914.4	1143.0
L1	215.9	282.4	304.8	403.4	419.1	457.2	762.0	838.2	914.4	1143.0
D	200	224	250	355	400	450	-	-	-	-
D1	-	-	-	-	-	-	500	500	630	710
H	460	565	674	958	1146	1406	-	-	-	-
H1	-	-	-	-	-	-	2071	2203	2530	3220
WEIGHT(Kg)	22	41	59	119	193	291	687	876	1201	2258

### CLASS 600

UNIT : mm

SIZE	2	3	4	6	8	10	12	14	16	18	20
L	292.1	355.6	431.8	558.8	660.4	787.4	838.2	889.0	990.6	1092.2	1193.8
L1	292.1	355.6	431.8	558.8	660.4	787.4	838.2	889.0	990.6	1092.2	1193.8
D	200	250	355	450	500	630	-	-	-	-	-
D1	-	-	-	-	-	500	630	630	710	710	800
H	549	650	773	1130	1258	1576	-	-	-	-	-
H1	-	-	-	-	-	1727	1921	2219	2455	2578	2855
WEIGHT(Kg)	35	64	110	222	405	626	878	1165	1490	1836	2410

# PRESSURE SEAL BONNET TYPE



## END CONNECTION

- R.F FLANGED ENDS TO ASME B16.5
- B.W. ENDS TO ASME B16.25
- R.T.J FLANGED ENDS TO ASME B16.5
- SIZE 26" AND LARGER, FLANGED ENDS ACCORDING TO ASME B16.47 SER.A OR SER.B

## STANDARD MATERIAL SPECIFICATIONS

NO.	PART NAME	MATERIAL		
1	BODY	A216 - WCB	A217 - WC6	A217 - C12A
2	BONNET	A216 - WCB	A217 - WC6	A217 - C12A
3	DISC	A216 - WCB+STL	A217 - WC6+STL	A217 - C12A+STL
4	STEM	A479 - 410	A479 - 410	A479 - 410
5	HAND WHEEL	A53	A53	A53
6	BODY SEAT RING	A576 - 1020+STL	A182 - F11+STL	A182 - F91+STL
7	BACK SEAT RING	A216 - WCB	A217 - WC6+STL	A217 - C12A+STL
8	GASKET	GRAPHITE	GRAPHITE	GRAPHITE
9	PACKING	GRAPHITE+GRAPHITE WITH INCONEL WIRE		
10	GLAND FLANGE	A283 - D	A283 - D	A283 - D
11	GLAND BOLT	A193 - B7	A193 - B7	A193 - B7
12	GLAND NUT	A194 - 2H	A194 - 2H	A194 - 2H
13	YOKE	A283 - D	A283 - D	A283 - D
14	PACKING GLAND	A576 - 1020+Cr	A479 - 410	A479 - 410
15	BONNET BOLT	A193 - B7	A193 - B16	A193 - B16
16	BONNET NUT	A194 - 2H	A194 - 4	A194 - 4
17	GEAR BOX	DUCTILE IRON	DUCTILE IRON	DUCTILE IRON
18	BOLT	A193 - B7	A193 - B7	A193 - B7
19	SPRING WASHER	A576 - 1045+Zn	A576 - 1045+Zn	A576 - 1045+Zn
20	YOKE BAR	A576 - 1020	A576 - 1020	A576 - 1020
21	YOKE NUT	A194 - 2H	A194 - 2H	A194 - 2H
23	RETAINER	A576 - 1045+Cr	A240 - 304	A240 - 304
24	ADAPTER RING	A576 - 1045+Cr	A240 - 304	A240 - 304
25	DISC GUIDE	A216 - WCB	A217 - WC6	A217 - C12A
26	DISC SPRING	INCONEL X - 750	INCONEL X - 750	INCONEL X - 750
27	STOPPER	A283 - D	A283 - D	A283 - D
28	BONNET CLAMP	A576 - 1045	A576 - 1045	A576 - 1045
29	STOP BAR	A576 - 1020	A576 - 1020	A576 - 1020
30	STEM COVER	A53	A53	A53
31	YOKE CAP	A576 - 1020	A576 - 1020	A576 - 1020
32	YOKE SLEEVE	A439 - D2C	A439 - D2C	A439 - D2C
33	HINGE NUT	A47 - 32510+Zn	A47 - 32510+Zn	A47 - 32510+Zn
34	NIPPLE	STEEL	STEEL	STEEL

## DIMENSION AND WEIGHT

### CLASS 600

UNIT :mm

SIZE	2	3	4	6	8	10	30
L	292.1	355.6	431.8	558.8	660.4	787.4	-
L1	177.8	254.0	304.8	457.2	584.2	711.2	1651.0
D	200	250	355	450	500	630	-
D1	-	-	-	355	500	500	710
H	586	705	872	1089	1274	1520	-
H1	-	-	-	1300	1490	1720	4010
WEIGHT(Kg)	29	52	121	189	339	497	7033

### CLASS 900

UNIT :mm

SIZE	2	3	4	6	8	16	24
L	368.3	381.0	457.2	609.6	736.6	1130.3	1549.4
L1	215.9	304.8	355.6	508.0	660.4	1092.2	1549.4
D	315	355	355	-	-	-	-
D1	-	-	-	500	500	500	710
H	658	773	896	-	-	-	-
H1	-	-	-	1287	1495	2542	3646
WEIGHT(Kg)	33	59	110	227	349	1638	4338

### CLASS 1500

UNIT :mm

SIZE	2	3	4	6	8	10	12	14	16	18	20	26
L	368.3	469.9	546.1	704.9	831.9	990.5	1130.3	1257.3	1384.3	1536.7	1663.7	-
L1	215.9	304.8	406.4	558.8	711.2	863.6	990.6	1066.8	1193.8	1346.2	1473.2	1473.2
D	315	355	400	630	-	-	-	-	-	-	-	-
D1	-	-	-	500	630	710	710	800	900	710	710	800
H	658	832	963	1178	-	-	-	-	-	-	-	-
H1	-	-	-	1316	1497	1843	2105	2307	2655	2926	3041	3515
WEIGHT(Kg)	40	66	121	312	458	1121	1344	1658	2064	2883	5678	7015

### CLASS 2500

UNIT :mm

SIZE	3	6
L	577.9	914.4
L1	368.3	609.6
D	355	630
D1	-	-
H	750	1010
H1	-	-
WEIGHT(Kg)	75	379